

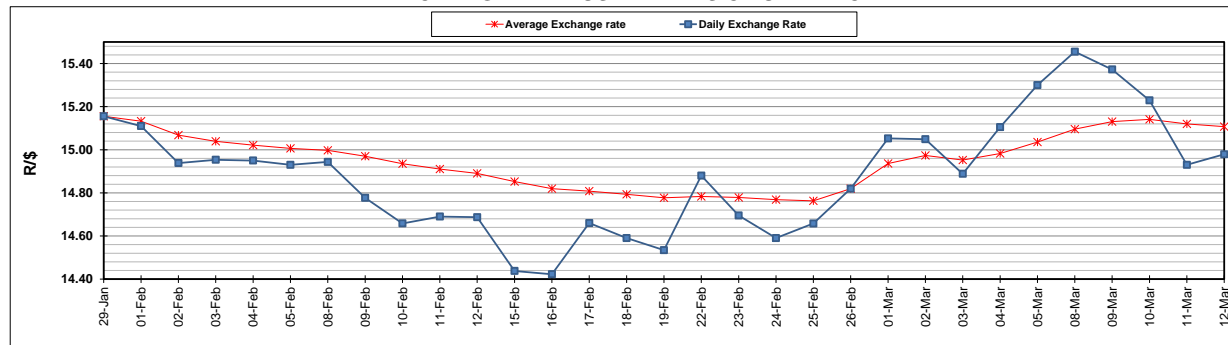
	PETROL 95 ULP	PETROL 93 ULP & LRP	DIESEL 0.05%	DIESEL 0.005%	ILL. PAR.
GAUTENG PUMP PRICE (SA c/l) AS FROM 03/03/2021	1,632.000	1,615.000	-	-	-
WHOLESALE PRICE (SA c/l) AS FROM 03/03/2021	-	-	1,412.420	1,416.820	845.688
SINGLE NATIONAL MAXIMUM RETAIL PRICE	-	-	-	-	1,071.000
BASIC FUEL PRICE - 12/03/2021 (SA c/l)	767.635	756.675	717.954	720.611	694.677
PRESS RELEASE CONTRIBUTION TO BFP 03/03/2021 - 12/03/2021 (SA c/l)	665.170	658.170	653.630	658.030	633.128
UNIT OVER/(UNDER) RECOVERY - 12/03/2021 (SA c/l)	(102.465)	(98.505)	(64.324)	(62.581)	(61.549)
AVERAGE BASIC FUEL PRICE 26/02/2021 - 12/03/2021	737.399	727.000	704.494	707.361	681.853
AVERAGE UNIT OVER/(UNDER) RECOVERY 26/02/2021 - 12/03/2021	(89.956)	(86.557)	(65.591)	(64.604)	(61.543)

ANALYSIS MOVEMENT OF AVERAGE OVER/(UNDER) RECOVERY

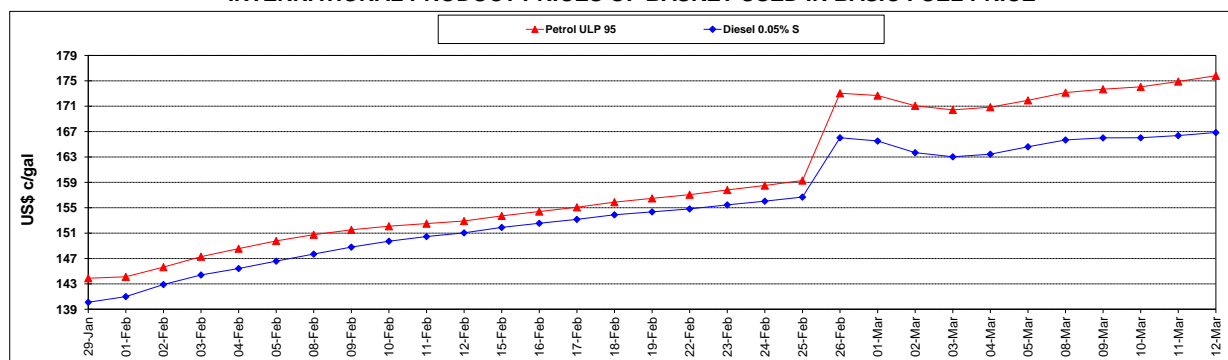
	PETROL 95	PETROL 93	DIESEL 0.05%	DIESEL 0.005%	ILL. PAR.
- MOVEMENT IN INTERNATIONAL PRODUCT PRICES	(73.155)	(69.993)	(49.540)	(48.488)	(46.008)
- MOVEMENT IN EXCHANGE RATE	(16.801)	(16.564)	(16.051)	(16.116)	(15.535)
AVERAGE UNIT OVER/(UNDER) RECOVERY 26/02/2021 - 12/03/2021	(89.956)	(86.557)	(65.591)	(64.604)	(61.543)

R/\$ EXCHANGE RATE - (R/\$14.9790 - 12/03/2021)

EXCHANGE RATE USED IN BASIC FUEL PRICE



INTERNATIONAL PRODUCT PRICES OF BASKET USED IN BASIC FUEL PRICE



BASIC FUEL PRICE IN SA CENTS PER LITRE

